

Machine Learning Approach for Cervical Cancer Prediction

Dhivya¹, R. Dharani² and R. Raja Guru³

¹Assistant Professor, Department of Computer Science and Business Systems .Kumarasamy College of Engineering, Karur, Tamilnadu, India, Email: dhivyainfo@gmail.com

²Assistant Professor, Department of Computer Science and Business Systems, M.Kumarasamy College of Engineering Karur, Tamilnadu, India, Email: dharaniravi13@gmail.com

³Associate Professor, Department of Computer Science and Business SystemS, M.Kumarasamy College of Engineering, Tamilnadu, India, Email: hodesbs@mkce.ac.in

Abstract: Women within the global are affected by many sicknesses amongst the ones sicknesses Cervical Cancer is likewise referred to globally. Every 12 months many most cancers instances are being registered for the duration of the global. Cervical most cancers is ranked fourth of all of the different not unusual place cancers consistent with WHO. Prediction of this most cancers in its early tiers may be cured, keeping off the demise price. Many human beings are much less privy to this sort of most cancers as this sickness is symptom much less. Performance of screening take a look at in ordinary bases cancerous cells may be detected in its early tiers which reduces the mortality price of human beings each 12 months. There are many scientific tactics for the prediction of this most cancers like pap-smear take a look at, colposcopy, biopsy, HPV take a look at or HPV DNA take a look at and different screening exams are performed. These scientific strategies are blended with the Artificial Intelligence for much less fake price and greater correct results. This paper considers pap-smear take a look at snap shots for the prediction of cancerous cells blended with Deep Learning strategies for greater green results. Convolution Neural Networks (CNN's) ResNet50 pre-educated version for the prediction of cancerous cells which produces correct results. The proposed paintings classify the cells from the inputted snap shots. This most cancers may be cured while it's far with inside the preliminary tiers, the diagnosed ordinary cells allows us for the similarly treatment. The proposed method classifies all of the instructions with 74.04% of accuracy in prediction of cells for max wide variety of epochs. Also in addition, it specifies the elegance of the trying out image.

Keywords: Deep Learning, Convolution Neural Network, ResNet50, Transfer Learning, Cancer of Cervix, Pap-Smear snap shots

I. INTRODUCTION

Many centuries were passing for the invention of most cancers sickness, but it's been an undertaking to the Medical Sciences to abolish most cancers instances during the world. But they

succeeded with inside the prediction and therapy of the sickness in its early degrees as much as a few extents. Cancer is the gathering of sicknesses. Human frame includes trillions of cells. Normally, cells divide and shape new cells while the cells turn out to be older they die and people useless cells are changed with the aid of using the brand new cells. This cells alternative is performed even if the cells are damaged. The uncontrollable depend of recent cells technology ends in most cancers in human frame, manufacturing of pointless new cells cause tumors. There are many styles of cancers found in this world. Some cancers are malignant they unfold to different tissues with inside the frame [13]. Thus, it's higher to expect the cancerous cells on the early degrees. There are many scientific techniques to find out the most cancers in its early degrees which allows the sufferers to keep away from the worst case. When as compared to the olden days the Medical Sciences are an awful lot greater advanced. As there's a saying, "Prevention is higher than therapy" it's higher to save you human from most cancers sickness with the aid of using vaccinating early. There are vaccines for plenty sicknesses like polio, small pox, flu and different sicknesses in addition the development of Medical Sciences helped human races to invent vaccine for most cancers sickness that can save you the most cancers assaults to a few extent [4]. Cancer sickness is gender biased thus, each male and woman act as victims. Most not unusual place cancers in ladies are breast, colorectal, endometrial, cervical, lung and pores and skin cancers as consistent with American Cancer Society [2]. As depend of most cancers sufferers are growing in massive wide variety it's been undertaking to Medical Sciences. Many scientific techniques were invented with inside the prediction and therapy of most cancers [1]. As the generation has extensive unfold its wings in each region many novel strategies are being carried out for quicker results. Same manner Medical Sciences are blended with Artificial Intelligence for higher development in Medicine. Introduction of present day computing technology can lessen the human mistakes and additionally assist in quicker results. Machine Learning has originated from Artificial Intelligence which typically cope with Oncology branch in Medicine and

Deep studying is subpart of Machine Learning, fusion of Artificial Intelligence with human is stated to guide a fruitful bring about the continued centuries.

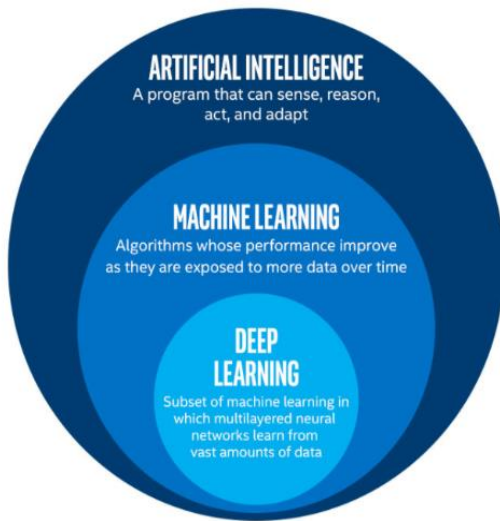


Figure 1: Incorporation of machine learning.

Cervical most cancers is, “the fourth maximum not unusual place most cancers in ladies consistent with the survey through World Health Organization” [20]. This is risky most cancers while in comparison to different cancers. Cervical most cancers belongs to the carcinoma family. The incidence of this most cancers is through getting inflamed with HPV virus. HPV virus is discovered through institution of scientists it's miles primarily transmitted via sexual contact. There are many kinds of HPVs gift, most cancers is due to type16 and type18 [19]. These sorts are stated to high-hazard HPVs as those purpose cancerous cells withinside the frame while type6 and type11 are low-hazard HPVs they purpose genital warts at the skin. Normally, in greater range of instances HPV contamination disappears in years with out inflicting any abnormalities however in a few instances, they're accountable for inflicting precancerous cells withinside the human frame. Cervical most cancers begins offevolved from the cervix this most cancers does not have any signs and symptoms until its early stages. This most cancers differs there are sorts it's miles discovered while visible below a microscope. The first kind is Squamous mobileular carcinoma begins offevolved withinside the cells that line the lowest of cervix. Another one is Adenocarcinoma it develops withinside the gland associated cells which might be gift on the top a part of the cervix [3]. As this most cancers does not have any signs and symptoms ordinary screening exams are stated to be carried out to live loose from the panic of getting the cancerous cells. This screening consists of Pap-smear check which ends the presence or absence of precancerous cells. When the outcomes are received if the end result suggests us the presence of atypical cells they need to be in addition handled or can also additionally require a few extra exams to be carried out. If there aren't anyt any such atypical cells it does not require any in addition examination [12].

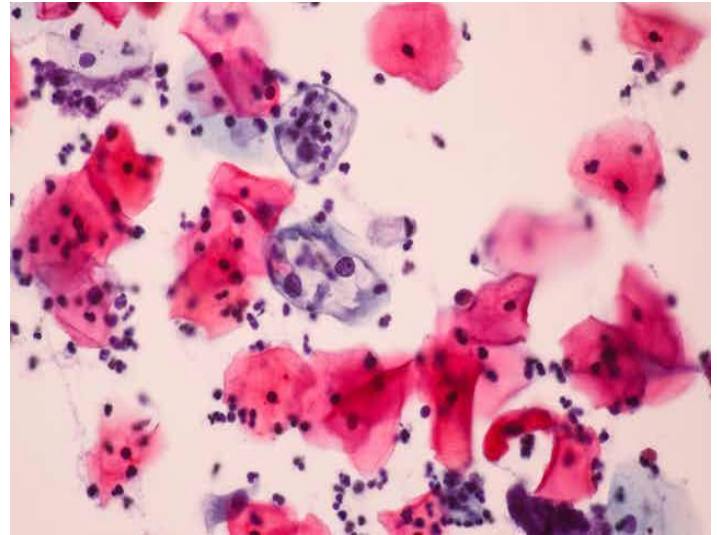


Figure 2: Image of Pap-smear test of abnormal cell

The photographs are received through appearing pap-smear check the ones photographs are called “pap-smear photographs”. The cells are accrued from cervix and screening is accomplished primarily based totally at the pattern cells taken. Those photographs are stated to be processed through the usage of the unconventional strategies to pick out the cells whether or not they're regular or atypical. As there may be development with inside the technology day-through-day Artificial Intelligence has wide – unfold its wings with inside the area of healthcare. There are many algorithms and strategies to are expecting the cells, classify the cells and additionally to section the cells. Deep Learning fashions with inside the prediction of cancerous cells is extra green whilst in comparison to Machine Learning algorithms. Classification of cells is accomplished quicker as pre-educated strategies of CNN are used which doesn't require to be commenced from the scratch. In this paper pap-smear photographs are taken into consideration and primarily based totally on the ones photographs cells are recognized as cancerous and non-cancerous cells. The recognized cells go through 7 instructions' namely superficial squamous, intermediate squamous and columnar epithelial are set of regular cells. Mild, mild and excessive dysplasia, additionally carcinoma-in-situ are instructions of atypical cells.

II. RELATED WORKS

From the many years the remedy of most cancers has taken many paths, the whole abolishment might not be completed however hazard of effecting and additionally prediction of the ailment may be completed. Any ailment may be cured while its being detected in its early ranges identical manner even most cancers also can be cured while it's far being anticipated in its preliminary ranges. But cervical most cancers is hard to expect in its early ranges because it doesn't have any early symptoms. Screening is most effective the manner that it may be anticipated consequently ordinary

screening is completed for the prediction of cancerous cells. The screening effect is probably monitored false – tremendous from time to time or is probably behind schedule to keep away from such dangers Artificial Intelligence has been delivered with inside the healthcare.

Many algorithms are getting used and additionally many greater equipment and strategies are used and being in use for the quicker and much less false – tremendous price with inside the prediction of cancerous cells. Many researchers have anticipated the cervical most cancers via way of means of the use of one of a kind algorithm.

Shimizu et al., [17] has expressed perspectives on method of AI in Oncology. Artificial Intelligence (AI) works much like the human intelligence many computational algorithms are implemented for recognition, prediction, type and lots of other. Machine Learning (ML) is evaluated from AI and Deep mastering is part of ML. Deep Learning is implemented in remedy for the motive of analysis of diseases, type of cells primarily based totally on snap shots acquired from scientific checks completed to expect the form of ailment. AI has drawn its very own specialization with inside the area of Medicine which made modifications in workflow of scientific processes in the direction of the diseases. Accuracy, specificity, sensitivity and performance of scientific effects were increased. In upcoming many years it's far anticipated to have computational information even in Medical Sciences for greater correct effects with in much less time span.

Hinton et al., [8] has a perception that Deep gaining knowledge of has modified the health-care in the approaching decades. Deep gaining knowledge of has deep networks with input, output and plenty of intermediate layers. Deep gaining knowledge of offers with complex fashions withinside the discipline it's far being used. It extracts capabilities for the in addition workflow and has effectively surpassed the human specialists in effects with much less flaws. Neural Networks upload an alternative “hidden layers” which offers the troubles in greater green way. The wide variety of hidden layers are restrained with a view to keep away from the complexity withinside the evolved model. As new algorithms are located each time the ability of packages in numerous fields will growth rapidly.

Geeitha et al., [6] has proposed Machine Learning fashions in reading gene expression blended with specific Data Mining strategies. Also the significance of characteristic choice and type strategies which classify benign and malignant cervical cells. According to the survey, it's far stated that Machine Learning can address huge volumes of records and may without problems offer accessibility to the detection of cancer. Comparative evaluation of Machine Learning fashions which includes preserve out method, Backward Elimination Hilbert-Schmidt Independence Criterion (BAHSIC), Singular Value Decomposition Entropy gene choice (SVD Entropy), SMOTE technique, J48, Random tree forest, Boosted Decision Tree, Sequential Elimination method and classifiers which includes SVM, Naïve Bayes, Logistic Regression, KNN, ANN, MLP, WEKA segmentation classifier etc., are implemented. SVM offers better prediction accuracy while blended with KNN and SMOTE that is advanced for imbalanced records. Even alaven though the prediction charge is better the characteristic extraction and choice is a chunk tough

therefore researchers have determined in destiny to perform the paintings in Deep Learning that can address variety of huge datasets with dimensionality reduction.

Rayavarapu et al., [15] used famous Machine Learning strategies voting and Deep Neural Network (DNN) classifiers to are expecting boom of cancerous cells. By making use of supervised algorithms prediction is done. The preprocessed statistics is given to the classifiers which divide the statistics into education and trying out statistics. The end result is given to the vote casting classifier primarily based totally on the bulk vote casting the elegance label is acknowledged. DNN is implemented while while as compared vote casting classifier is exceedingly accurate. The characteristic extraction may be stepped forward in extinction as DNN takes greater time complexity

Devi et al., [5] expressed perspectives on prediction of cells with the aid of using making use of Artificial Neural Networks (ANN) from the screening technique results. ANN makes use of distinct architectures to reap excessive accuracy charge in prediction and category of cancerous cells. In destiny mixture of Gene Algorithm with Feed Forward Neural Networks is used to are expecting cervical most cancers cells from the pap and liquid-primarily based totally cytology take a look at images.

Kurnianingsih et al., [10] has expressed perspectives that segmentation of cells and category of cells play a prime position in prediction of cancerous cells. In the proposed paintings Mask R-CNN is used for segmentation. The category section makes use of VGG-like Net. For the previous facts ResNet10 is used similarly with Mask R- CNN. Future paintings in particular specializes in the implementation of deeper community fashions to growth the performance.

Athinarayanan et al., [16] used an automatic detection device to discover the cells from the enter snap shots produced on the time of trying out the affected person. Texture capabilities are premeditated withinside the selection making device in conjunction with SVM. The experimental effects are as compared with different classifiers KNN and ANN which resulted SVM is higher classifier. This proposed device allows the medical doctor to make selection quicker for similarly remedy of the affected person because the category of cells is carried out correct.

Ghoneim et al., [7] has drawn a end from preceding instances that computer-aided structures are greater correct and Deep gaining knowledge of primarily based totally structures are greater green. Cervical Cancer prediction right here is handled Convolutional Neural Networks (CNN) version observed with Extreme gaining knowledge of machine (ELM) primarily based totally classifier. CNN extract capabilities from uncooked enter and that information is fed in to ELM-classifier, right here CNN fashions are used “VGG-sixteen Net and CaffeNet” for the green extraction of capabilities after which output is fed into ELM-classifier which ends the detection of cervical most cancers cells.

Taha et al., [14] has targeted especially at the type step as withinside the prediction of most cancers type of cells play a important role. Rather designing type set of rules from scratch CNN mixed with SVM is used which saves time intake and is extra accurate. CNN right here is used for function extraction because it research the pap pictures layer via way of means of layer and SVM is used for the choice making reason which allows

to categorise regular cells from the cancerous cells. Ungarpalli et al., [11] completed level of type first is it classifies quantity of cells gift withinside the enter pictures and the second one is the magnificence of the mobileular. CNN is implemented for the categorization of cells. Proposed paintings can are expecting instructions from the seven instructions in which as with inside the destiny it's far anticipated to are expecting all of the seven instructions additionally offer the mobileular segmentation for the all instructions withinside the given records accurately.

III. PROPOSED WORK

Classification

As pix are taken into consideration with inside the proposed paintings pre-processing is the number one step performed. Classification of cells is stated to be executed as first step withinside the proposed paintings. The statistics that has been taken into consideration includes 7 lessons such dataset is partitioned into education set and validation set. The pre-skilled version of CNN ResNet50 is used withinside the proposed paintings for the reason of the class and identity of cancerous cells from given image. Classification method below is going different collection of steps as following:

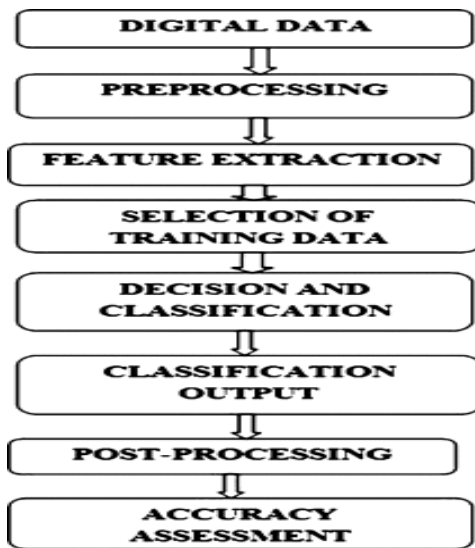


Figure 3: Classification process

Pap-Smear data collected

Database pix are accumulated from the “Herlev University

Hospital” database which includes 7 distinctive training and 20 distinctive features. The pattern cells are accumulated from the cervix of the human frame through screening method.

The screening take a look at achieved is pap-smear take a look at, it's miles achieved to pick out the cancerous cells in its preliminary stages that may keep away from the heavy hazard of cancer. The 7 training of cells gift withinside the dataset are partitioned as regular and abnormal. The names of the cells which can be categorised withinside the dataset are noted below.

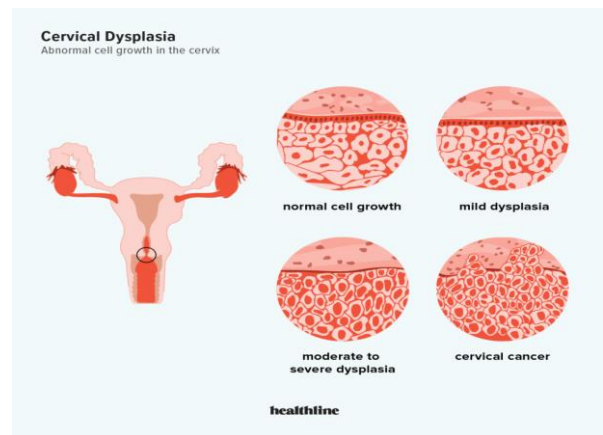


Figure 4: Cells of Pap smear test

ResNet50:

Convolutional Neural Networks are hidden layers which might be used for the reason of coping with the photos. Training of those fashions take lesser time in comparison to different Machine Learning algorithms. Classifiers used right here are pre-skilled earlier with hundreds of thousands of photos thus, no want to begin from the scratch which optimizes the schooling time of the model. There are diverse skilled fashions in CNN “Residual Neural Networks (ResNet)” is taken into consideration for the prediction of cervical most cancers cells [18]. ResNet has many variations in it, the proposed paintings makes use of ResNet50 for the prediction. All the variations paintings the identical however the range of layers vary. ResNet50 is used for the class of photos. In CNN structure addition of layers observed one after the opposite reasons the trouble of deterioration wherein it is able to be solved through introducing ResNet [9] because it solves the trouble through introducing residual blocks which generates residual feature which enables us alter the enter capabilities to improve the high-degree capabilities.

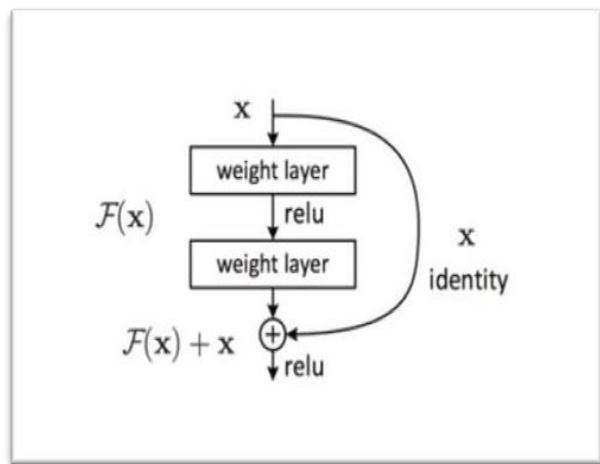


Figure 5: Structure of Residual Neural Networks (ResNet)

The identification hyperlink represents the shortcut connection, wherein the ResNet makes use of the activations from preceding layers because it skips few layers which enables us to teach the version faster. Similar to CNN, ResNet50 has ranges in it which incorporates an identification block and convolution blocks. The identification block and convolution block has different three convolution blocks in them.

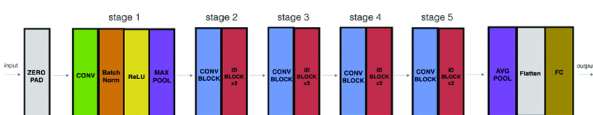


Figure 6: ResNet50 Architecture

In the proposed paintings ResNet50 is utilized by imparting the pap-smear photographs dataset for the identity of cancerous cells from the photographs. As recognized switch studying fashions are skilled on a trouble and are used for the same problems. The photographs are taken into consideration and are feed into the proposed paintings for prediction. Proposed paintings consists of education and trying out set that are taken into consideration through partitioning the dataset. The wide variety of epochs are cited manually and are modified if required. The check photograph is likewise fed to the proposed paintings manually. By the use of the Adam optimizer withinside the proposed method mobileular class is performed. The proposed method makes use of softmax feature because the activation feature. Softmax feature gift withinside the output layer predicts the multinomial opportunity distribution. In the proposed paintings all of the layers

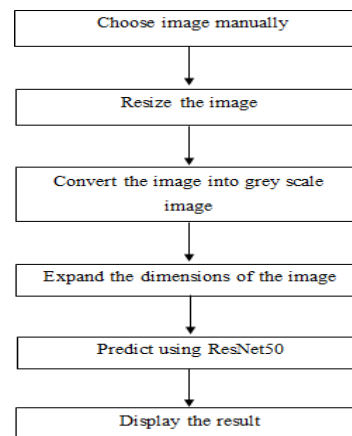


Figure 7: Workflow of prediction of cells

are taken into consideration as they may be besides the remaining layer it's far skilled consistent with the requirement. The paintings glide for the prediction of cells is proven with inside the underneath figure. The prediction manner is executed best through deciding on the picture manually from the taken dataset. The picture is resized in to unique constant length as it's miles less difficult to extract functions from the snap shots whilst all are of identical length. In the following step the coloured snap shots are transformed to gray scale snap shots. The schooling and checking out units are divided from the given dataset and the manually decided on picture is transformed into pixels through making use of the filters gift with inside the pre- educated version the picture is identified. The picture and sophistication which it belongs to is displayed because the result.

IV. EXPERIMENTAL RESULTS

The proposed approach works at the dataset containing three magnificence regular and four magnificence strange pap-smear screening snap shots. The Image Data Generator magnificence is described with inside the version to growth the education set for green outcomes. Preprocessing is completed with the aid of using changing the snap shots into pixel values a threshold cost is stated to be maintained if the cost acquired are better than the brink cost they're taken into consideration as 1 and closing as 0. Batch length is taken into consideration as 32 and optimizer used is Adam optimizer. "Categorical Cross entropy" is used because the loss feature and "Softmax feature" is used as activation feature. The device with i3 processor is used for strolling the version. The outcomes of the proposed paintings is taken for special epochs are examined randomly and the accuracies range for each epoch. The proposed paintings can classify and expect with an accuracy of 74.04%. The green outcomes are represented in a graph below:

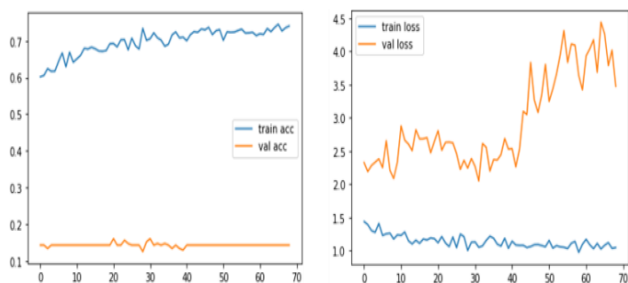


Figure 8: Efficiency of the proposed method

The end result received additionally consists of the picture which is chosen manually for the prediction of the form of magnificence it belongs. The picture is displayed in a separate window as below:

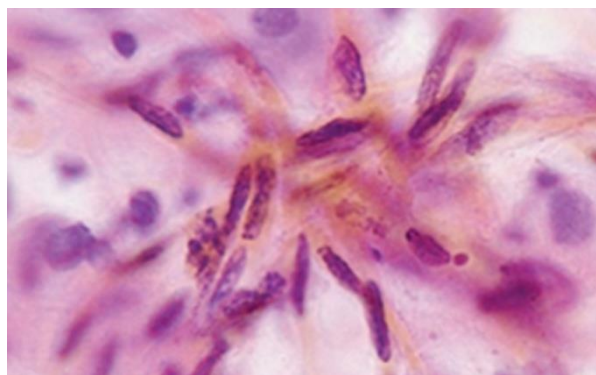


Figure 9: Output Image after prediction

V. CONCLUSION

The proposed paintings can expect all of the 7 lessons gift withinside the dataset with the aid of using using “ResNet50” with an accuracy of 74.04%. Compared to CNN, pre-skilled version ResNet50 presents greater correct effects in prediction and class of cells gift withinside the given records while CNN offer 44% of accuracy in prediction of all of the lessons. The proposed technique is simple to train, as switch getting to know is used wherein it want now no longer learn from the scratch. The proposed technique additionally predicts the elegance of the photograph both it belongs to carcinoma – in – situ, extreme dysplasia, slight dysplasia, moderate dysplasia, columnar epithelial, intermediate squamous epithelial and superficial squamous epithelial are the bizarre and everyday mobileular lessons gift withinside the given dataset. Thus, the proposed paintings offer correct effects with the aid of using predicting the kind and sophistication of the cells. In addition, to the proposed technique experiments may be carried out at the greater superior photograph dataset. Also can use excessive quit pre-skilled strategies like Inception, VGG-16, Yolo v3 etc., for green accuracy.

REFERENCES

- [1] All about Cancer, Cancer Society of Finland, Available at: <https://www.allaboutcancer.fi/facts-about-cancer/detection/#8667b054> (Accessed date 25.07.2020).
- [2] American Cancer Society, Cancer Facts for Women, Available at: <https://www.cancer.org/healthy/find-cancer-early/womens-health/cancer-facts-for-women.html> (Accessed date 25.07.2020).
- [3] American Cancer Society, What is Cervical Cancer?, Available at: <https://www.cancer.org/cancer/cervical-cancer/about/what-is-cervical-cancer.html> (Accessed date 25.07.2020).
- [4] Cancer.Net, ASCO.org, What are Cancer Vaccines? Available at: <https://www.cancer.net/navigating-cancer-care/how-cancer-treated/immunotherapy-and-vaccines/what-are-cancer-vaccines> (Accessed date 25.07.2020).
- [5] Devi, M. A., Ravi, S., Vaishnavi, J., & Punitha, S. (2016). Classification of Cervical Cancer Using Artificial Neural Networks. *Procedia Computer Science*, 89, 465–472. <https://doi.org/10.1016/j.procs.2016.06.105>
- [6] Geeitha, S., & Thangamani, M. (2020). A cognizant study of machine learning in predicting cervical cancer at various levels-a data mining concept. *International Journal on Emerging Technologies*, 11(1), 23–28
- [7] Ghoneim, A., Muhammad, G., & Hossain, M. S. (2020). Cervical cancer classification using convolutional neural networks and extreme learning machines. *Future Generation Computer Systems*, 102, 643–649. <https://doi.org/10.1016/j.future.2019.09.015>
- [8] Hinton, G. (2018). Deep learning-a technology with the potential to transform health care. *JAMA - Journal of the American Medical Association*, 320(11), 1101–1102. <https://doi.org/10.1001/jama.2018.11100>
- [9] Jeremy Jordan, Common Architectures in Convolutional Neural Networks, Available at: <https://www.jeremyjordan.me/convnet-architectures/> (Accessed date: 12.01.2021).
- [10] Kurnianingsih, Allehaibi, K. H. S., Nugroho, L. E., Widyawan, Lazuardi, L., Prabuwo, A. S., & Mantoro, T. (2019). Segmentation and classification of cervical cells using deep learning. *IEEE Access*, 7, 116925–116941. <https://doi.org/10.1109/ACCESS.2019.2936017>
- [11] Manasa Ungrapalli, N. S., & Myna, A. N. (2019). Classification of pap smear images for cervical cancer using convolutional neural network. *International Journal of Innovative Technology and Exploring Engineering*, 9(1), 2801–2807. <https://doi.org/10.35940/ijitee.J1226.119119>

- [12] National Cancer Institute, Cervical Cancer Screening, Available at: <https://www.cancer.gov/types/cervical/patient/cervical-screening-pdq> (Accessed date 25.07.2020).
- [13] National Cancer Institute, What is Cancer? Available at: <https://www.cancer.gov/about-cancer/understanding/what-is-cancer> (Accessed date 24.07.2020).
- [14] N, T. . B. D. . J. (2017). Classification of Cervical Cancer Using Pap-Smear Images: A Convolutional Neural Network Approach. Department of Electrical and Computer Engineering, 1(d), 698–706. <https://doi.org/10.1007/978-3-319-60964-5-23>
- [15] Rayavarapu, K., & Krishna, K. K. V. (2018). Prediction of Cervical Cancer using Voting and DNN Classifiers. Proceedings of the 2018 International Conference on Current Trends towards Converging Technologies, ICCTCT 2018, 1–5. <https://doi.org/10.1109/ICCTCT.2018.8551176>
- [16] S., A., & M.V., S. (2016). Classification of Cervical Cancer Cells in Pap Smear Screening Test. ICTACT Journal on Image and Video Processing, 06(04), 1234–1238. <https://doi.org/10.21917/ijivp.2016.0179>
- [17] Shimizu, H., & Nakayama, K. I. (2020). Artificial intelligence in oncology. Cancer Science, 111(5), 1452–1460. <https://doi.org/10.1111/cas.14377>
- [18] Towards data science, A comprehensive guide to Convolutional Neural Networks, Available at: <https://towardsdatascience.com/a-comprehensive-guide-to-convolutional-neural-networks-the-eli5-way-3bd2b1164a53> (Accessed date 12.01.2021).
- [19] UICC Global Cancer Control, Cervical cancer elimination, Available at: https://www.uicc.org/what-we-do/thematic-areas-work/cervical-cancer-elimination?gclid=CjwKCAiA57D_BRAZEiwAZcfCxZnop y3PUaLF0PmKco4esxdZ0pHfEybPwuHmJ QUAQPFrtukdCFbUVhoChSsQAvD_BwE (Accessed date 24.07.2020).
- [20] World Health Organization, Cervical Cancer, Available at: https://www.who.int/health-topics/cervical-cancer#tab=tab_1 (Accessed date 24.07.2020).