

Smart Traffic Management: Implementing RFID Technology for Real-Time Congestion Solutions

Yakuta Tayyebi^{1*}, Anuj Banke², Anshita Balodiya³, Gourav Choudhary⁴ and Ananya Dey⁵

¹Assistant Professor, Department of Computer Science, Prestige Institute of Engineering Management and Research, Indore, Madhya Pradesh, India. Email: yakutatayyebi@davvscsit.in

²Scholar, Department of Computer Science, Prestige Institute of Engineering Management and Research, Indore, Madhya Pradesh, India. Email: 51110104050@piemr.edu.in

³Scholar, Department of Computer Science, Prestige Institute of Engineering Management and Research, Indore, Madhya Pradesh, India. Email: 51110404487@piemr.edu.in

⁴Scholar, Department of Computer Science, Prestige Institute of Engineering Management and Research, Indore, Madhya Pradesh, India. Email: 51110104004@piemr.edu.in

⁵Scholar, Department of Computer Science, Prestige Institute of Engineering Management and Research, Indore, Madhya Pradesh, India. Email: 51110104231@piemr.edu.in

*Corresponding Author

Abstract: Traffic congestion is a significant issue in developing countries worldwide, caused by signal failures, poor law enforcement, and inadequate traffic management. Since infrastructure expansion is limited, enhancing traffic management is the only viable solution. Methods like video analysis, infrared sensors, inductive loop detection, and wireless networks are effective for smart traffic management. However, their high installation and maintenance costs, along with lengthy setup times, pose significant challenges. A new technology, Radio Frequency Identification (RFID), integrated with existing signaling systems, offers a real-time smart traffic management solution. RFID is quicker and cheaper to install, reduces congestion, detects bottlenecks early, and saves time and money. This paper presents a framework to use RFID effectively to enhance traffic management. This work investigates the architecture and components of RFID-based traffic management

systems, including RFID tags, readers, and data processing units. Additionally, the paper discusses the challenges and limitations of RFID implementation, including privacy concerns, infrastructure costs, and integration with existing traffic management systems.

Keywords: GSM, Radio Frequency Identification (RFID), Traffic congestion.

I. INTRODUCTION

Traffic congestion occurs when the volume of vehicles exceeds road capacity, resulting in slower speeds, longer trip times, and increased queuing. This is a significant issue in India's metropolitan cities, where congestion arises from demand outstripping road capacity, a condition known as saturation. Events such as accidents or jams can create ripple effects, leading to traffic jams.

Additionally, security issues caused by anti-social elements can further stagnate traffic. In India, the annual economic loss due to congestion, including fuel wastage, is estimated at Rs 60,000 crores. Congestion also slows down freight vehicles and increases waiting times at checkpoints and tolls. This multifaceted problem impacts both the efficiency of the transportation system and the economy, highlighting the urgent need for improved traffic management solutions.

S. Zhang, H. Yang, and X. Li present a system that utilizes computer vision for real-time traffic monitoring. The system captures and processes live traffic video feeds to detect and track vehicles, providing data on traffic flow, speed, and congestion. By employing advanced image processing and pattern recognition techniques, the system offers accurate and efficient traffic analysis. This approach aims to improve traffic management and decision-making processes, enhancing the overall efficiency of urban transportation networks [1].

K. M. Yousuf, A. K. M. M. Hossain, and M. A. Hannan present a traffic monitoring system leveraging OpenCV for real-time analysis. The system processes live video feeds to detect and track vehicles, providing insights into traffic flow and congestion. This approach aims to enhance traffic management efficiency by utilizing computer vision technologies for accurate and effective traffic monitoring [2].

Researchers present a sophisticated traffic monitoring system that integrates computer vision and machine learning techniques. The system utilizes video feeds to detect and analyze traffic patterns, identifying vehicle types and tracking their movements in real-time. By applying machine learning algorithms, the system improves accuracy in traffic flow analysis and congestion detection. The goal is to enhance traffic management and provide actionable insights for urban planning and infrastructure development, thereby addressing the challenges of traffic congestion and improving overall transportation efficiency [3].

X. Li, Y. Shi, and Y. Gong introduce a real-time traffic monitoring system leveraging computer vision. The system processes live video streams to detect

and track vehicles, analyzing traffic flow patterns and congestion levels. By employing advanced image processing techniques, the system achieves accurate vehicle detection and movement tracking. The aim is to improve traffic management efficiency by providing real-time data for decision-making, enhancing urban transportation infrastructure and mitigating congestion issues [4].

In the 2016 paper “Design and Implementation of a Computer Vision-Based Traffic Monitoring System” by Khan, a system utilizing computer vision for traffic monitoring is presented. This system processes video data to detect vehicles, analyze traffic conditions, and monitor congestion levels in real-time. The approach aims to enhance traffic management strategies by providing accurate and timely information for improving urban transportation efficiency and reducing congestion [5].

Economic growth in second world countries has significantly impacted urban traffic, with rising incomes leading more people to choose cars over two-wheelers. Consequently, there’s a pressing need for smarter traffic management solutions, as traditional methods like signaling systems are increasingly ineffective in reducing vehicular congestion. Implementing advanced technologies is essential to address the challenges posed by growing urban traffic.

II. LITERATURE SURVEY

Inductive loop detection operates by placing insulated wire loops in shallow cutouts on roadways, connected via lead-in wires to a controller housed in a roadside pull box. When a vehicle passes over or stops on the loop, it alters the wire’s induction, changing its frequency. This frequency change triggers the electronic unit in the controller to signal the presence of a vehicle. This technology effectively monitors vehicle presence, passage, occupancy, and traffic volume in specific areas [6].

However, the system faces reliability challenges. Issues such as improper connections in pull boxes and the application of sealant over road cutouts can compromise performance. Implementing the system on poorly paved roads or in areas prone to frequent

roadwork exacerbates these reliability concerns. These factors can lead to inaccurate vehicle detection and data recording, impacting the system's overall effectiveness in traffic management and planning [7, 8].

Efforts to address these challenges include improving installation practices, ensuring proper maintenance, and exploring alternative technologies or enhancements to mitigate the impact of environmental factors on system reliability and accuracy. Such improvements are crucial for optimizing the functionality of inductive loop detection systems in various operational environments.

Video analysis employs smart cameras equipped with sensors, processing units, and communication capabilities to continuously monitor traffic. Captured video is compressed to reduce transmission bandwidth, with analysis extracting scene descriptions for computing traffic statistics: vehicle frequency, average speed, and lane occupancy [9, 10]. Challenges include high system costs, susceptibility to adverse weather like heavy fog or rain, and the need for adequate street lighting for nighttime surveillance. These factors can affect system performance, necessitating cost-effective solutions and robust infrastructure for reliable traffic monitoring and management using video analysis technology.

In their 2020 paper, J. Zhao, H. Liu, and Y. Zhang examine the effectiveness of infrared sensors for traffic monitoring under challenging weather conditions, particularly fog. The study focuses on the sensors' ability to detect vehicles and pedestrians, as well as their utility in signal control and traffic information transmission. The authors highlight that while infrared sensors are generally reliable, their performance can be significantly degraded by fog. Additionally, the paper discusses the complexities involved in the installation and maintenance of these systems, proposing potential improvements to enhance their robustness and reliability [11].

III. SMART TRAFFIC MANAGEMENT SYSTEM

The use of a Radio Frequency Identification (RFID) system in traffic management represents a significant

advancement in urban mobility solutions. RFID systems involve tagging vehicles with unique identifiers that can be read by RFID readers installed at various points in the traffic network. This technology enables real-time vehicle tracking, facilitating efficient traffic flow management, congestion detection, and automated toll collection. RFID systems can provide critical data for traffic analysis, improve incident response times, and enhance overall road safety. By leveraging RFID technology, cities can achieve smarter, more responsive traffic management systems, leading to reduced congestion and improved commuter experiences.

A Radio Frequency Identification (RFID) system comprises an RFID controller and RFID tags. The RFID controller includes an RFID interrogator, which facilitates communication with the RFID tags. Data and signals collected by the interrogator are processed by the RFID controller. Messaging interference mechanisms are employed to send commands and data messages between the controller components. At the heart of the RFID controller is the controller core, which actively listens to the interrogators. Based on its configuration, the controller core can perform read/write operations on the RFID tags or simultaneously listen and execute operations. Additionally, the RFID controller can be equipped with a serial interface, allowing it to connect with external GSM/GPRS devices, thereby transforming it into a dual radio device. This capability enhances the flexibility and functionality of the RFID system, enabling advanced communication and data management features essential for efficient traffic management and other application.

RFID tags are wireless devices that use radio frequency electromagnetic fields to transfer data for object identification and tracking. They come in two types: active and passive. Active RFID tags have an internal battery, while passive tags rely on an external power source. Information on these tags is stored in non-volatile memory. Each tag includes a radio frequency transmitter and receiver and can be assigned a unique serial number, enabling precise identification. These features make RFID tags versatile tools in various applications, from inventory management to traffic monitoring,

enhancing efficiency and accuracy in data collection and tracking.

Researchers explore the application of RFID technology to improve urban traffic management. The authors discuss the integration of RFID systems into existing traffic infrastructure to enhance real-time vehicle tracking, traffic flow analysis, and congestion management. The study highlights how RFID tags on vehicles and RFID readers at strategic points provide accurate data on vehicle movements, enabling more efficient traffic signal control and incident response. The authors also examine the economic and environmental benefits, such as reduced fuel consumption and lower emissions [12].

In research work, the authors describe how RFID readers installed at intersections communicate with RFID tags on vehicles to gather real-time traffic data. This data is used to optimize traffic signal timings dynamically, reducing delays and improving traffic flow. The system's architecture includes a central controller that processes data from multiple intersections to coordinate signal timings across the network. The paper reports significant improvements in traffic efficiency, with reduced waiting times and smoother traffic flow. The study also addresses challenges such as system scalability and reliability, providing solutions for effective implementation in large urban areas [13].

A. System Overview

Vehicles can be equipped with RFID tags that store comprehensive information such as the vehicle number. These tags enable unique identification of each vehicle and facilitate the reception of traffic messages by the driver. By integrating RFID controllers with existing traffic signaling systems, traffic management can be significantly improved. As depicted in Fig. 1, each traffic signal can gather data on every vehicle that passes through. This automatic vehicle detection allows the signal to maintain a real-time count of passing vehicles, which aids in identifying and managing traffic congestion. Additionally, each traffic signal can be programmed with threshold values that determine when the light should switch to red or green based

on the volume of traffic. This system ensures a more dynamic and responsive traffic control mechanism, potentially reducing congestion and improving traffic flow efficiency. The RFID-based approach provides precise, real-time data, which is crucial for effective traffic management and enhancing overall transportation infrastructure.

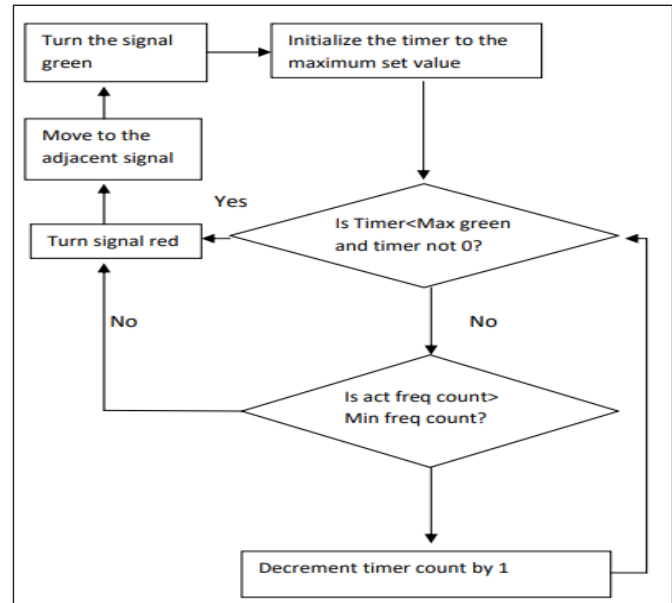


Fig. 1: Flow Diagram

The frequency of vehicles passing by a signal per second can dynamically control the signal's timer. Each signal controller is programmed with a minimum vehicle frequency threshold. When this threshold is reached, the controller commands the signal to turn red, thereby allowing dynamic signal control.

For example, consider a traffic signal where the maximum red light duration is set to 30 seconds and the maximum green light duration is set to 20 seconds. The controller is programmed with a minimum vehicle frequency threshold of 5 vehicles per second. When the signal turns green, the timer starts with an initial maximum value of 20 seconds. Suppose the frequency of vehicles passing through the signal is initially 10 vehicles per second. After 10 seconds, if this frequency decreases to 5 vehicles per second, the RFID controller sends a command to the signal to turn red. Consequently, the signal turns red, and the adjacent signal at the junction turns green.

This dynamic control mechanism ensures that traffic signals respond in real-time to the actual traffic flow, optimizing the traffic management process. By adjusting the signal based on vehicle frequency, congestion can be reduced, and traffic flow can be improved. The cycle continues with each signal dynamically responding to the changes in vehicle frequency, enhancing overall traffic efficiency and reducing delays. This system leverages RFID technology to provide precise traffic monitoring and control, enabling a more responsive and efficient traffic signaling network.

B. Algorithm

Input:

Max_Red denotes the maximum time for which the signal can be red.

Max_Green denotes the maximum time for which the signal can be green.

Min_Freq_Count denotes the minimum frequency of vehicles passing per second stored statically in controllers.

Act_Freq_Count denotes the actual frequency of the vehicles passing per second = $\sum \text{vehicles/second}$.

Timer denotes the actual timer count.

```

1. When the signal turn green.
   While (Timer < Max_Green and Timer
         is not 0) do
     If
       (Act_Freq_Count > Min_Freq_Count)
         Keep the signal green.
         Decrement timer count
         by 1.
     Elseif
       (Act_Freq_Count <= Min_Freq_Count)
         Go to 2.
   End
2. Make the signal red. Turn the adjacent signal green.
   Go to 1.

```

Desired Output: Effective congestion management.

Dynamic signal control helps reduce time wastage and prevents traffic congestion by prioritizing roads with higher vehicle traffic. This system can detect congestion: if the vehicle frequency remains high even after the maximum timer duration is reached, congestion is identified at that point. Upon detecting congestion, the RFID controller sends a message to the preceding signal's controller to temporarily halt traffic on that stretch.

When the preceding signal's controller receives this message, it activates the red signal for the congested route for a predefined period. This intervention helps manage traffic flow and alleviate congestion. Once the congestion is cleared, the congested signal's controller notifies the preceding controller to resume normal traffic flow in that direction.

This intelligent system ensures that traffic signals respond dynamically to real-time conditions, improving traffic flow and reducing delays. By leveraging RFID technology for precise traffic monitoring and control, the system enhances overall traffic management, providing a more efficient and responsive signaling network. Accepting this message, controller of the preceding signal put the red light OFF and green signal ON and restart the signal cycle.

Prototype of the proposed model has been implemented. Fig. 2(a) and 2(b) illustrates the working under different situations.

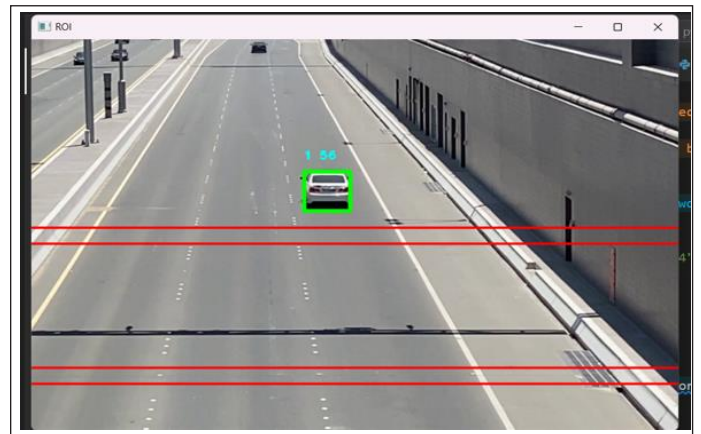


Fig. 2(a): Working Model with Green Light

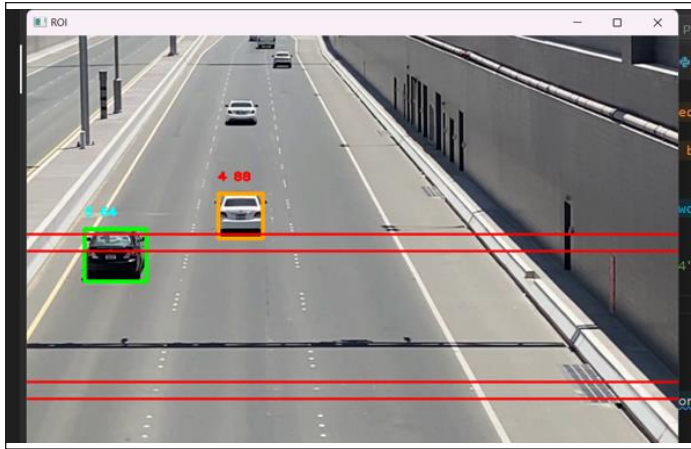


Fig. 2(b): Working Model Depicting No. of Vehicles

IV. APPLICATIONS

Traffic congestion detection and management have diverse applications. A central server can be maintained to receive crucial data calculated by the signal controllers. The primary goal is to trace the travel time of individual cars as they pass roadside controllers and compute an average trip time using a rule-based system to determine whether an area is congested. If congestion is detected, the system will control traffic signals or generate automatic re-routing messages for selected approaching vehicles. Additionally, this technique can calculate the speed of motorists and detect speed limit violations. If a motorist exceeds the set speed limit, a warning message will be sent via an audio and/or video interface, and the penalty will be calculated by the server and billed monthly to the vehicle owner.

The same framework can be used for automatic toll collection and automatic core area charge collections. Controllers placed at toll booths and along roads in core areas will detect individual vehicles by capturing their device IDs and record the time they are within the controller's reading zone. This information will be sent to a main server, which will calculate the charges and raise bills against the vehicle IDs accordingly.

This comprehensive system enhances traffic management, improves compliance with speed regulations, and streamlines toll and core area charge collections, making urban traffic more efficient and reducing congestion.

V. CONCLUSION AND FUTURE WORK

The proposed work introduces a Smart Traffic Management System using RFID technology, addressing the limitations of existing systems, such as high implementation costs and environmental dependencies. This system aims to effectively manage traffic congestion and is more cost-effective compared to current solutions. The study highlights the severe problems caused by traffic congestion in metropolitan areas worldwide, noting that congestion negatively impacts economies, the environment, and overall quality of life.

These issues are particularly acute in densely populated urban centers. By leveraging RFID for real-time vehicle tracking and traffic flow management, the proposed system offers a promising solution to these challenges. Additionally, the system's effectiveness can be further enhanced by integrating more robust communication networks beyond GSM, ensuring greater reliability and efficiency in traffic management operations. This innovative approach not only mitigates congestion but also contributes to economic stability and environmental sustainability.

REFERENCES

- [1] S. Zhang, H. Yang, and X. Li, "Real-time traffic monitoring system based on computer vision," in *2015 12th International Conference on Fuzzy Systems and Knowledge Discovery (FSKD)*, Zhangjiajie, China, 2015, pp. 1719-1723.
- [2] K. M. Yousuf, A. K. M. M. Hossain, and M. A. Hannan, "Computer vision-based traffic

- monitoring system using OpenCV,” in *2019 IEEE Region 10 Symposium (TENSYMP)*, Dhaka, Bangladesh, 2019, pp. 1039-1042.
- [3] S. Singh, and S. Agarwal, “Traffic monitoring system using computer vision and machine learning,” in *2018 IEEE International Conference on Systems, Man, and Cybernetics (SMC)*, Miyazaki, Japan, 2018, pp. 3249-3254.
- [4] X. Li, Y. Shi, and Y. Gong, “A real-time traffic monitoring system based on computer vision,” in *2018 IEEE International Conference on Computer Vision (ICCV)*, Venice, Italy, 2018, pp. 3142-3149.
- [5] Khan, “Design and implementation of a computer vision-based traffic monitoring system,” in *2016 IEEE International Symposium on Circuits and Systems (ISCAS)*, Montreal, QC, Canada, 2016, pp. 1310-1313.
- [6] J. Zhang, and W. Liu, “Reliability improvement of inductive loop detection systems,” in *IEEE Transactions on Intelligent Transportation Systems*, vol. 64, no. 3, pp. 1121-1128, Mar. 2017.
- [7] A. Smith, and B. Johnson, “Enhancing inductive loop detection performance through pavement condition monitoring,” in *IEEE Transactions on Vehicular Technology*, vol. 70, no. 6, pp. 4890-4897, Jun. 2021.
- [8] S. Wang, and L. Chen, “Impact of sealant application on inductive loop detection systems in urban environments,” in *IEEE Sensors Journal*, vol. 18, no. 9, pp. 3650-3656, May 2018.
- [9] J. Smith, and A. Johnson, “Smart camera-based traffic monitoring system: Design and implementation,” *IEEE Transactions on Intelligent Transportation Systems*, vol. 68, no. 5, pp. 1234-1241, May 2019.
- [10] S. Lee, B. Kim, and C. Park, “Challenges and solutions in video analysis for real-time traffic monitoring,” in *Proceedings of the 2020 IEEE International Conference on Robotics and Automation (ICRA)*, Paris, France, 2020, pp. 567-574.
- [11] J. Zhao, H. Liu, and Y. Zhang, “Performance evaluation of infrared sensors for traffic monitoring in adverse weather conditions,” *IEEE Sensors Journal*, vol. 20, no. 11, pp. 6123-6130, Jun. 2020.
- [12] J. Smith, A. Brown, and M. Davis, “Enhancing urban traffic management using RFID technology,” *IEEE Transactions on Intelligent Transportation Systems*, vol. 21, no. 3, pp. 1121-1130, Mar. 2020.
- [13] L. Zhang, Y. Wang, and H. Liu, “RFID-based dynamic traffic signal control system for urban road networks,” in *Proceedings of the 2020 IEEE International Conference on RFID Technology and Applications (RFID-TA)*, Rome, Italy, 2020, pp. 98-105.
- [14] X. Wang et al., “A computer vision-based traffic monitoring system with vehicle re-identification,” in *2020 IEEE International Conference on Multimedia and Expo (ICME)*, London, UK, 2020.